



AI IN APPLIED LINGUISTICS: CHATGPT AND LANGUAGE TEACHING

AAAL
AMERICAN ASSOCIATION FOR APPLIED LINGUISTICS

Presented by Dr Lucas Kohnke
lmakohnke@eduhk.hk

The Education University of Hong Kong

The Department of English Language Education
&
Graduate School



TODAY'S TALK

- ›› AI vs GenAI
- ›› Language Teaching and GenAI Integration
- ›› Proposed Framework & Implications
- ›› Q&A

Simple Definition

Artificial Intelligence

AI refers to computer systems designed to perform tasks that typically require human intelligence, such as problem-solving, decision-making, and learning from data.

Generative Artificial Intelligence

Generative AI refers to systems that can create new content—text, images, audio, video, or even code—based on patterns it has learned from large datasets.

Large Language Models

Large Language Models (LLMs) are a type of Generative AI trained on massive amounts of text data to understand and produce human-like text.

AI (Artificial Intelligence)

- Traditional AI (Analyzes data and provides responses, e.g., Duolingo)
- Generative AI (Creates new content, e.g., ChatGPT)
 - Powered by LLMs (Large Language Models)

Teachers...

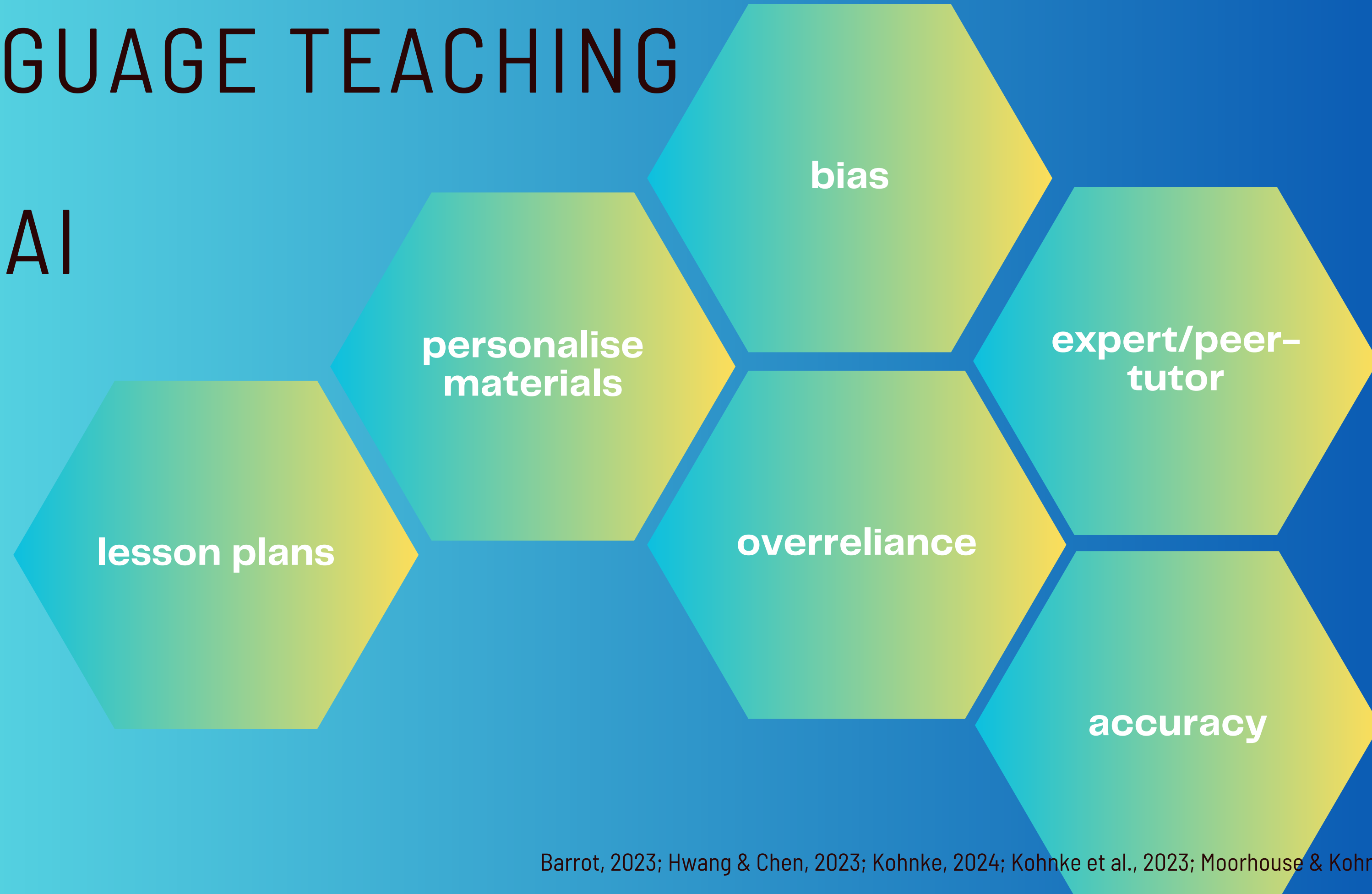
**SKILLS
AND
KNOWLEDGE**

**TRANSFORMATIVE
POTENTIAL**

**AI SPECIFIC
LITERACY AND
COMPETENCIES**

HIGH UPTAKE

LANGUAGE TEACHING AND GENAI



Why AI Tools?

1. **Instant feedback** - AI can provide instant feedback, allowing students to correct mistakes on the spot and learn more efficiently. This not only benefits students but also relieves some of the grading workload for teachers.
2. **Enhanced listening and speaking practice** - Advanced AI language tools can provide natural language understanding and voice recognition capabilities, allowing learners to practice listening and speaking skills outside the classroom. This additional practice can be crucial for students who need to catch up or for those who are more motivated.
3. **Data-driven insights** - AI tools can collect and analyse data on student performance, helping teachers to identify gaps in understanding, track progress, and tailor instruction accordingly.
4. **Global classroom experience** - Some AI platforms enable students to interact with other English learners around the world, providing exposure to a variety of accents and cultures.
5. **Cultural understanding** - AI tools can provide cultural information and contextual experiences to develop a better understanding of language and how it's used. It can simulate real-life scenarios where the language is used, which can make learning more authentic and relevant.
6. **Diverse learning materials** - AI can help create or source a diverse range of materials suitable for different levels, learning needs, and interests.
7. **Support for different learning needs** - AI tools can deliver instruction through a variety of mediums, including text, audio, video, and interactive exercises, catering to different learning needs.
8. **24/7 Learning opportunities** - With AI, learning can take place anytime, anywhere, making it possible for students to study and practice English outside of regular classroom hours.
9. **Time saving** - AI applications are fast and can do things much more quickly than teachers and so save teacher more time.
10. **Interactive learning environment** - Many AI tools involve more personalised and game-like elements that can make learning more enjoyable and engaging. This can motivate students to spend more time learning and practising English.



Practical Tips

Generating Authentic Materials:

- *Tip:* Use ChatGPT to create dialogues, short stories, news articles, or blog posts on specific topics relevant to your learners' needs and interests.
- *Example:* "Create a short dialogue between two friends discussing their weekend plans, using intermediate-level English vocabulary."
- *Practical Use:* Provides fresh, engaging content that reflects real-world language use.

Generating Grammar Exercises:

- *Tip:* Ask ChatGPT to create fill-in-the-blank, multiple-choice, or sentence-reordering exercises targeting specific grammar points.
- *Example:* "Create 10 fill-in-the-blank sentences focusing on the use of the present perfect tense."
- *Practical Use:* Saves time on exercise creation and provides targeted practice opportunities.

Developing Culture-Specific Content:

- *Tip:* Use ChatGPT to create scenarios or dialogues that reflect specific cultural contexts.
- *Example:* "Create a short dialogue between a tourist and a local in Japan, focusing on appropriate greetings and customs."
- *Practical Use:* Enhances learners' cultural awareness and prepares them for real-world interactions.



Practical Tips

Brainstorming Lesson Ideas:

- *Tip:* Use ChatGPT to brainstorm ideas for lessons, activities, and assessment tasks.
- *Example:* "Suggest some creative lesson ideas for teaching the topic of travel to intermediate English learners."
- *Practical Use:* Overcomes writer's block and generates new ideas for engaging lessons.

Creating Lesson Outlines:

- *Tip:* Use ChatGPT to create a basic lesson outline, including objectives, activities, and assessment strategies.
- *Example:* "Create a lesson outline for a 90-minute class on the topic of healthy eating."
- *Practical Use:* Streamlines lesson planning and ensures that all key elements are included.

So, what are we doing...



FRAMEWORK



GENAI
TECHNOLOGICAL
PROFICIENCY



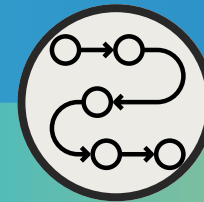
PEDAGOGICAL
COMPATIBILITY OF
GENAI IN ENGLISH
LANGUAGE TEACHING



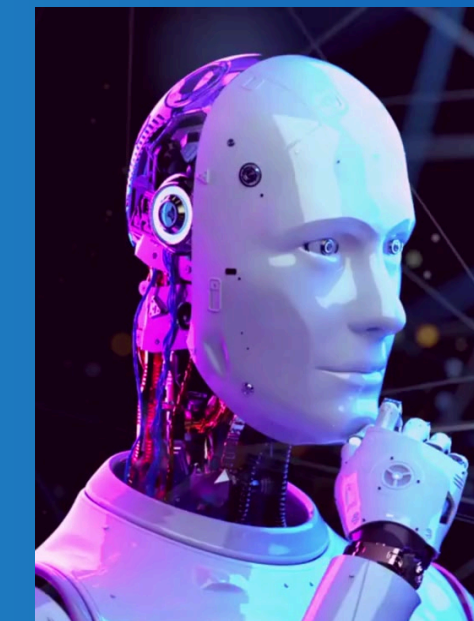
TEACHERS'
PROFESSIONAL
WORK



RISK, WELL-BEING
AND THE ETHICAL
USE OF GENAI



PREPARATION OF
STUDENTS FOR A
GENAI WORLD



PRACTICAL IMPLICATIONS



COMPREHENSIVE TRAINING

- Introductory course
- hands-on



LEARNING COMMUNITIES

- Monthly meetups
- Share experiences



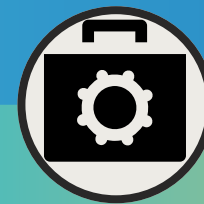
FEEDBACK SESSIONS

- Open Dialogue
- Survey & interviews



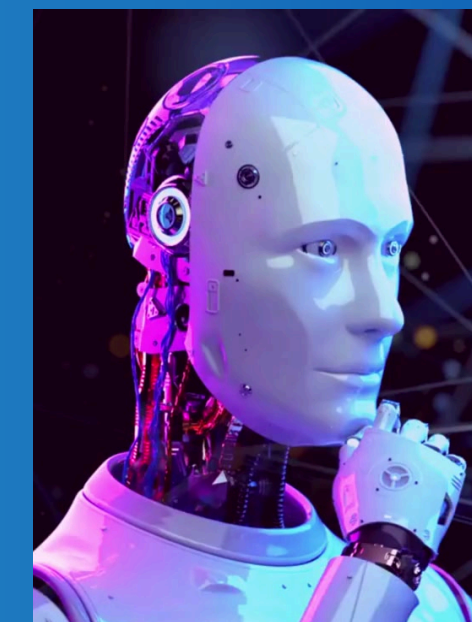
TRAINING/RESOURCES - ETHICAL ISSUES

- Data privacy
- Bias



AI TOOLKITS

- AI assistance
- Adaptable learning paths



Common Software/Tools...

The logo for MAGIC SCHOOL, featuring the words "MAGIC" and "SCHOOL" in a stylized, colorful font with a star above "MAGIC".

Magicschool.ai

<https://www.magicschool.ai/>

The logo for Alayna, featuring a blue square icon with a white triangle and the word "Alayna" in a bold, black font.

Alayna

<https://app.alayna.us/>

The logo for Diffit, featuring the word "Diffit" in a large, teal, cursive font and "For Teachers" in a smaller, teal, sans-serif font below it.

Diffit

<https://app.diffit.me/>

The logo for perplexity, featuring a blue geometric icon and the word "perplexity" in a black, sans-serif font.

perplexity.ai

<https://www.perplexity.ai/>

The logo for MIZOU, featuring the word "MIZOU" in a colorful, stylized font and "BETA" in a small red box above the "O".

Mizou

<https://mizou.com/>

The logo for twee, featuring the word "twee" in a bold, black, lowercase font.

Twee

<https://twee.com/>

The logo for Lingolette, featuring the word "Lingolette" in a white, sans-serif font.

Lingolette

<https://lingolette.com/>

The logo for PrettyPolly, featuring a colorful parrot icon and the word "PrettyPolly" in a red, sans-serif font.

PrettyPolly

<https://www.prettypolly.app/>

The logo for Gamma, featuring a purple and blue geometric icon and the word "Gamma" in a black, sans-serif font.

Gamma

<https://gamma.app/>



Goblin tools

<https://goblin.tools/>

Common Software/Tools...



Eduaide.ai

<https://www.eduaide.ai/>



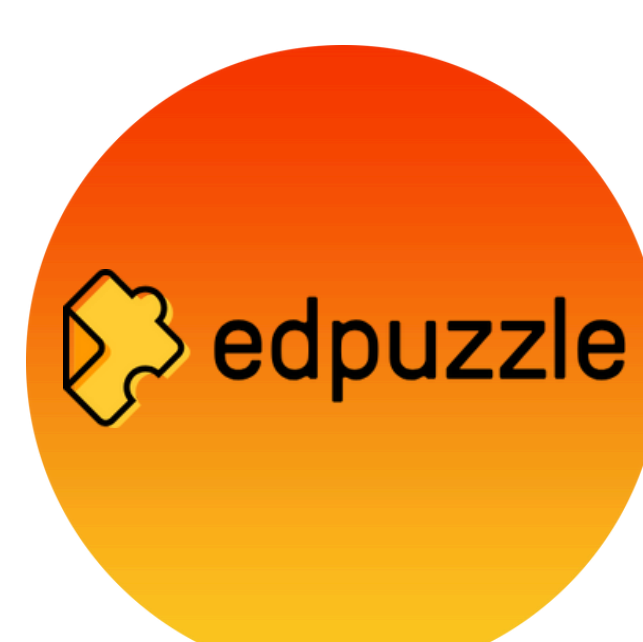
talkto.ai/

<https://talkto.ai/>



Live Worksheets

<https://www.liveworksheets.com/>



EdPuzzle

<https://edpuzzle.com/>



VIZARD

<https://vizard.ai/>



WRITE TONE

<https://writetone.com/>



EDCAFE.AI

<https://app.edcafe.ai/>



Vidnoz

<https://www.vidnoz.com/>



EIGO AI

<https://eigo.ai/>



Wizer.me

<https://app.wizer.me/>

Future Research Needs - Supporting Teachers with AI Research in Language Education



CONCLUDING THOUGHT

We need to further understand/explore the complexities of integrating AI in English language teaching.

We need to better prepare future and current educators to be “GenAI-ready.”

We need to change language teacher education needs to change to ensure it prepares graduates who can capitalize on technological advancements.





- Barrot, J.S. (2023). Using ChatGPT for second language writing: Pitfalls and potentials. *Assessing Writing*, 57, 1000745. <https://doi.org/10.1016/j.asw.2023.100745>
- Cervera, M.C., & Caena, F. (2022), Teacher's digital competence for global teacher education. *European Journal of Teacher Education*, 45(4), 451-455.
- Hockly, N. (2023). Artificial intelligence in English language teaching: The good, the bad and the ugly. *RELC Journal*, 54(2), 445-451, <https://doi.org/10.1177/00336882231168504>
- Hwang, G.-J., & Chen, N.-S. (2023). Editorial Position Paper: Exploring the Potential of Generative Artificial Intelligence in Education: Applications, Challenges, and Future Research Directions. *Educational Technology & Society*, 26(2), I-XVIII. [https://doi.org/10.30191/ETS.202304_26\(2\).0014](https://doi.org/10.30191/ETS.202304_26(2).0014)
- Kohnke, L.**, & Zou, D. (2025). The Role of ChatGPT in Enhancing English Teaching: A Paradigm Shift in Lesson Planning and Instructional Practices. *Educational Technology & Society*, 28(3), 4-20.
- Kohnke, L.**, Zou, D., & Su, F. (2025). Exploring the potential of GenAI for personalised English teaching: Learners' experiences and perceptions. *Computers and Education: Artificial Intelligence*, Article 100371. <https://doi.org/10.1016/j.caeai.2025.100371>
- Kohnke, L.**, Moorhouse, B.L., & Zou, D. (2023). Exploring generative artificial intelligence preparedness among university language instructors. *Computers & Education: Artificial Intelligence*, 5, 100156. <https://doi.org/10.1016/j.caeai.2023.100156>
- Kohnke, L.** (in-press) Generative AI and Teacher Education. In A. Al-Hoorie., & L. McCallum. (Eds.), *The Palgrave Encyclopedia of Computer-Assisted Language Learning*.
- Moorhouse, B.L. (2024). Generative artificial intelligence and ELT. *ELT Journal*, 78(4), 378-392. <https://doi.org/10.1093/elt/ccae032>
- Moorhouse, B.L., & **Kohnke, L.** (2024). The effect of generative AI on initial language teacher education: The perceptions of teacher educators. *System*, 122, <https://doi.org/10.1016/j.system.2024.103290>
- Moorhouse, B.L., **Kohnke, L.**, & Chiu, T. (2023). Developing a context- and subject-specific professional digital competence framework for beginning English language teachers in Hong Kong. *Asia-Pacific Education Researcher*, 33, 1105-1115. <https://doi.org/10.1007/s40299-023-00778-2>
- Starkey, L. (2020). A review of research exploring teacher preparation for the digital age. *Cambridge Journal of Education*, 50(1), 37-56. <https://doi.org/10.1080/0305764X.2019.1625867>
- Yeo, M.A. (2023). Academic integrity in the age of artificial intelligence (AI) authoring apps. *TESOL Journal*, 14(3), e716. <https://doi.org/10.1002/tesj.716>.



Thank You



For Your Attention!

Send me an email!

lmakohnke@eduhk.hk

<https://www.researchgate.net/profile/Lucas-Kohnke-2/research>